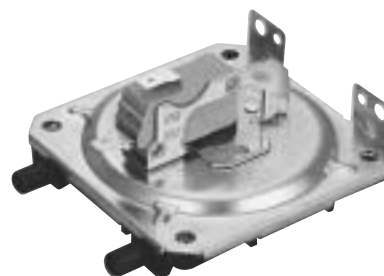


# C6065

## Differential Pressure Switch

The C6065 functions as a combustion airflow supervisor, with a safe start interlock, suitable for positive or negative pressure applications.

This switch can be used with air or any normal product of gas combustion.



### Specifications

Switch action	SPDT, n.o. contact closes on differential pressure rise to ON point
Operating pressure	ON: 74Pa min OFF: 29 ± 12Pa
Allowable pressure	980Pa
Ambient temperature	-10 to +70°C
Ambient humidity	90% RH at 40°C (no condensation allowed)
Power	250Vac, 2A (resistive load)
Mounting	Vertical
Control medium	Air
Life	200,000 cycles
Cover material	Zinc coated steel plate
Housing material	Polyethylene phthalate
Pressure connection port	6.4mm dia. hose end
Electrical connection	#250 Faston male quick connect terminal
Mass	80g

### Selection Guide

Model No.	Description
C6065A204: 2	Differential pressure (switch)

### Dimensions

(Unit: mm)

