



SPS300A/B

Intelligent Pressure Sensor/Switch

The SPS300A/B high-accuracy and high-function digital pressure detectors have a liquid-filled dual diaphragm (SUS316L) and a semiconductor-based pressure detection element incorporated into the pressure detection unit, used for gauge pressure measurement.

The SPS300A employs electric current and relay contact outputs, whereas the SPS300B offers two-stage relay contact (independent) outputs.



Specifications

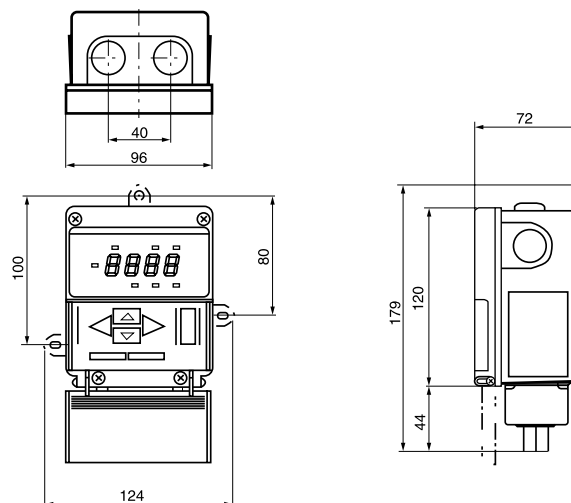
General	Power	100/200Vac: 82 to 110/164 to 220Vac 120/240Vac: 99 to 132/198 to 264Vac	
	Power consumption	7W max. at relay on or 20mA output	
	Ambient temperature	-20 to +60°C (no freezing)	
	Ambient humidity	40°C, 90% RH max. (no condensation allowed)	
	Mass	Approx. 1.1kg	
	Breakage pressure	3 times the maximum pressure of range, but 1.5 times for the 0 to 300kPa, 0 to 3500kPa, -100 to +3500kPa, 0 to 3.5MPa, -0.1 to +3.5MPa, 0 to 3bar, 0 to 3.5bar, -1 to +35bar models	
	Allowable pressure	1.1 times the maximum pressure of range, but 1.0 times for the 0 to 300kPa, 0 to 3500kPa, -100 to +3500kPa, 0 to 3.5MPa, -0.1 to +3.5MPa, 0 to 3bar, 0 to 3.5bar, -1 to +35bar models	
Output	Model	SPS300A	SPS300B
	Control mode	Current + relay contact (SPDT)	Relay contact (SPDT) + relay contact (SPDT)
	Cycle	25ms	
	Accuracy	± 0.25% FS ± 1 digit (0 to 50°C)	
Indication and setting	Display	Digital 4-digit, 7-segment LEDs	
	Response speed	Indication output: 100ms. Current output: 50ms. Relay contact output: 50ms.	
	Accuracy	± 0.25% FS ± 1 digit (0 to 50°C)	

Accessories (sold separately)

Model No.	Description
J-14026	Siphon
81403871-001	Cover packing for replacement

Dimensions

(Unit: mm)



Selection Guide

I II III IV V Example: SPS300A200A10

Segment	Model No. selection		Description
I	Basic No.	SPS300A	Intelligent Pressure Sensor
		SPS300B	Intelligent Pressure Switch
II	Range		(Refer to Pressure Ranges table.)
III	Mounting method	A	Wall mount
		B	Panel mount
IV	Power	1	100/200Vac 50/60Hz
		2	100/240Vac 50/60Hz
V	Options	00	None
		0D	With inspection data
		0T	Tropicalization
		0B	Tropicalization + inspection data

Pressure Ranges

Code	kPa	Code	MPa
200	0 to 100	-	-
201	0 to 200	-	-
202	0 to 500	-	-
203	0 to 1000	903	0 to 1
204	0 to 2000	904	0 to 2
205	0 to 3500	905	0 to 3.5
206	-100 to +100	-	-
207	-100 to +1000	907	-0.1 to +1
208	20 to 100	-	-
209	0 to 300	-	-
210	-100 to +2000	910	-0.1 to +2
211	-100 to +3500	911	-0.1 to +3.5